

## MAINTENANCE AND REPAIR:

- Unplug the unit from any power source prior checking or maintenance.
- Keep electric motor or other parts away from moisture to avoid short circuit.
- Regular checking and maintenance is recommended, clean all the dust off. Simply damp with mild detergent by a cloth for cleaning.
- Detach the unit only by professionals.

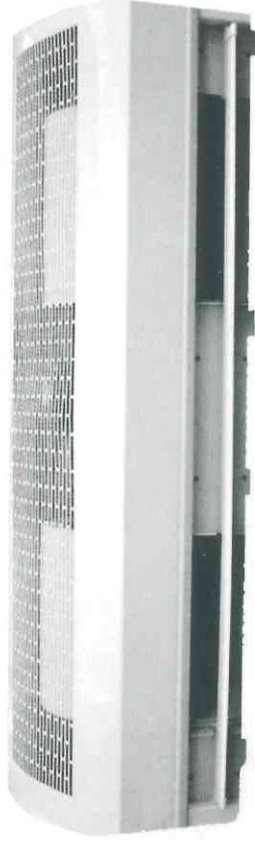
## SPECIFICATIONS:

BODY LENGTH	Power (KW)	Installation Height (m)	Air Velocity (m/s)	Air Vol. (m <sup>3</sup> /h)	Noise (dB)	Weight (kg)
1000mm	1.1	6	28	3709	72	33
1200mm	1.5			3709		36
1500mm	1.85			5563		47

**NOTE:** Rated voltage and frequency are stated as per rating label.

# Industrial Air Curtain

## Operating Instructions



Before using this unit, please read these instructions completely.

**PRODUCT OUTLINE:**

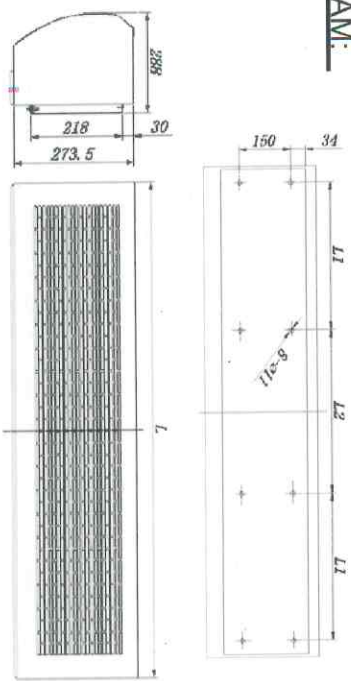
INDUSTRIAL AIR CURTAINS are designed for installation in shops, office buildings, hotels and restaurant doorways. They discharge a curtain of air, which effectively shut out outside air. Use them to keep out insects, uncomfortable smells, and dust from indoor where a large number of people pass in and out of the factories or warehouses. These air curtains also prevent air escaping from an air-conditioned room.

**CONDITIONS OF USE:**

Please DO NOT install the unit under following conditions:

1. Do not operate ambient temperature over 50 °C or below -10 °C.
2. A relative humidity over 95% at room temperature and steamy area.
3. Contains or oily smoke.
4. Materials or gases may cause explosion.
5. Nearly corrosive gases.
6. Locate in where may be sprinkle with water.

**DIAGRAM:**



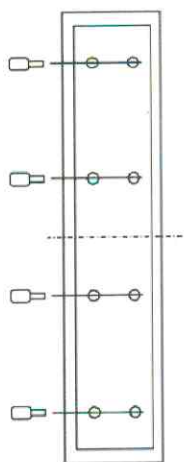
[Dimension : mm]

BODY LENGTH	A	L1	L2
1000mm	1000	320	300
1200mm	1200	420	300
1500mm	1500	570	300

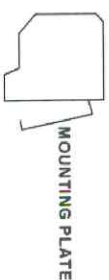
**INSTALLATION:**

1. Unscrew the mounting plate and take it off. (Fig. 1, Fig.2)
2. Drill a hole as the instruction. Then put into the bolt and fix it with cement. (Fig.3)

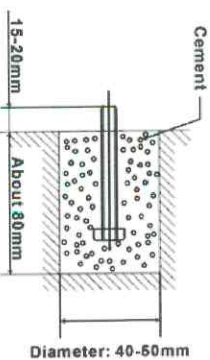
3. Hanging on the mounting plate and ensure fix it. (Fig.4)
4. Installing the machine onto the mounting plate and ensure that it is fixed safely. (Fig.5)



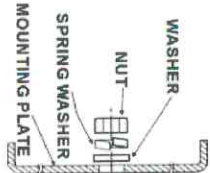
(Fig. 1)



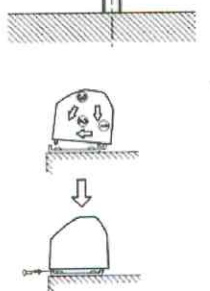
(Fig. 2)



(Fig. 3)



(Fig. 4)



(Fig. 5)

**CAUTIONS / INSTALLATIONS:**

During installing the unit, please pay special attention to the following points in order to obtain the ultimate efficiency.

1. Install on solid place to avoid vibrations when machine is running and also for safety reason unnecessary noise caused by vibration can be prevented.
2. AIR CURTAINS are used for indoor purpose.
3. Depending on the height to choose the most suitable model. If it is fixed too high, the shut-off distance will be affected then the efficiency will be reduced.
4. The air is drawn in front of the unit and is blown out downwards.
5. Several units can be mounted next to each other when wide door opening occur. Under such condition, a narrow space in between 20-40mm may happened.
6. During installation, the mounting plate should not have a gap between the walls.
7. The distance between the unit and the ceiling must reserve at least 50mm.
8. The unit is installed horizontally.
9. Recommend installing the machine at the height of at least 3.5M above the ground.
10. A triple pole switch should precede the appliance with at least 3mm breaking gap.

