

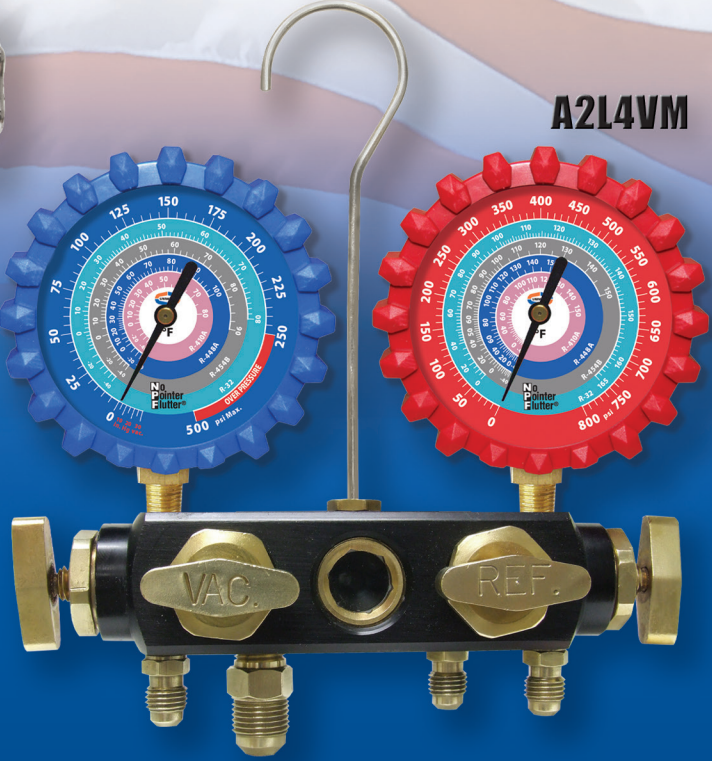
A2L MANIFOLDS

A2LM

A2LSM



A2L4VM



BONUS

**A2L TANK
ADAPTER
INCLUDED
with A2L Manifolds**



Also Available Separately
Part# UA2LA
1/4" F.F. (LH) X 1/4" M.F. (RH)

Since 1949



QUALITY TOOLS THAT GO TO WORK WITH YOU®



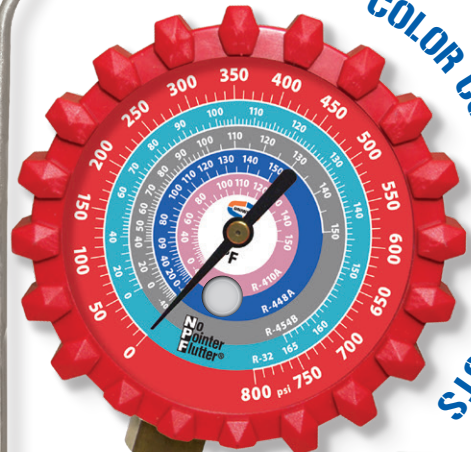
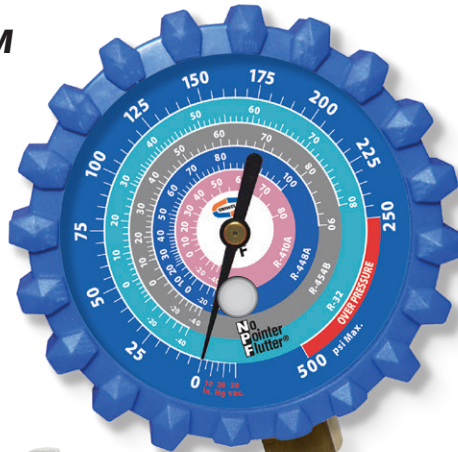
A2L Brass Manifold

3-1/8" NPF® Gauges
R-32/R-454B/R-448A/R-410A



A2LM

BONUS
A2L TANK
ADAPTER
INCLUDED

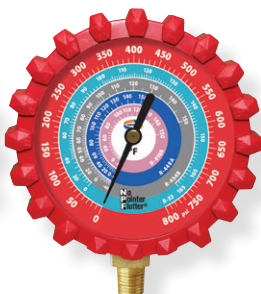
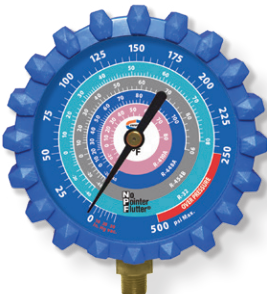


COLOR CODED GAUGE BOOTS



A2LM5BV

- Patented Uniweld forged brass body with easy access 45° front hose holders
- NPF® No Pointer Flutter® 3-1/8", easy-to-read gauges with color coded refrigerant scales and gauge boots
- Metal hand wheel valve stems with reseatable Teflon® packing for leak proof reliability
- Extended valve stems for ample knuckle clearance
- Quick action valve assembly for 1/2 turn fully open or fully closed
- High Pressure Soft Magic® Barrier Hoses with EZ-Turn Anti-Blowback or Ball Valve fittings



(R-32/R-454B/R-448A/R-410A)
Replacement Gauges 3-1/8" [80mm]
G439ND - A2L Red, Pressure
G440ND - A2L Blue, Compound

Part#	Description	R-32/R-454B/R-448A/R-410A PSI/F°
A2LM	A2L 2-V Brass Manifold with 3-1/8" NPF® Gauges (R-32/R-454B/R-448A/R-410A) – No Hoses	
A2LM3BV	A2L 2-V Brass Manifold with 3-1/8" NPF® Gauges (R-32/R-454B/R-448A/R-410A) and 3ft. Ball Valve Hoses	
A2LM5BV	A2L 2-V Brass Manifold with 3-1/8" NPF® Gauges (R-32/R-454B/R-448A/R-410A) and 5ft. Ball Valve Hoses	
A2LM3EZ	A2L 2-V Brass Manifold with 3-1/8" NPF® Gauges (R-32/R-454B/R-448A/R-410A) and 3ft. EZ Turn Hoses	
A2LM5EZ	A2L 2-V Brass Manifold with 3-1/8" NPF® Gauges (R-32/R-454B/R-448A/R-410A) and 5ft. EZ Turn Hoses	
A2LM3H	A2L 2-V Brass Manifold with 3-1/8" NPF® Gauges (R-32/R-454B/R-448A/R-410A) and 3 ft. Soft Magic® Barrier Hoses	
A2LM5H	A2L 2-V Brass Manifold with 3-1/8" NPF® Gauges (R-32/R-454B/R-448A/R-410A) and 5ft. Soft Magic® Barrier Hoses	



A2L Spirit Manifold



3-1/8" NPF® Gauges
R-32/R-454B/R-448A/R-410A

COLOR CODED GAUGE BOOTS



BONUS
A2L TANK ADAPTER INCLUDED

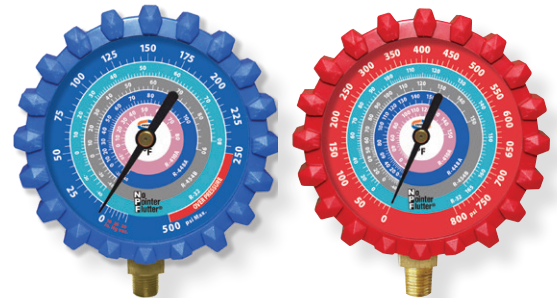
A2LSM



- Spirit Manifold, proudly designed and manufactured in the U.S.A.
- Lightweight extruded aluminum body and easy-grip handles for positive control
- Double O-ring piston valve for long reliable service
- Easy access 45° front hose holders
- Large easy-to-read 3-1/8" steel case NPF® gauges with color-coded protective boots
- High Pressure Soft Magic® Barrier Hose set with optional EZ-Turn Anti-Blowback or Ball Valve Fittings



A2LSM5EZ



(R-32/R-454B/R-448A/R-410A)
Replacement Gauges 3-1/8" [80mm]
G439ND - A2L Red, Pressure
G440ND - A2L Blue, Compound

Part#	Description	R-32/R-454B/R-448A/R-410A PSI/F°
A2LSM	A2L 2-V Spirit Aluminum Manifold with 3-1/8" NPF® Gauges (R-32/R-454B/R-448A/R-410A) – No Hoses	
A2LSM5BV	A2L 2-V Spirit Aluminum Manifold with 3-1/8" NPF® Gauges (R-32/R-454B/R-448A/R-410A) and 5ft. Ball Valve Hoses	
A2LSM5EZ	A2L 2-V Spirit Aluminum Manifold with 3-1/8" NPF® Gauges (R-32/R-454B/R-448A/R-410A) and 5ft. EZ Turn Hoses	
A2LSM5H	A2L 2-V Spirit Aluminum Manifold with 3-1/8" NPF® Gauges (R-32/R-454B/R-448A/R-410A) and 5ft. Soft Magic® Barrier Hoses	

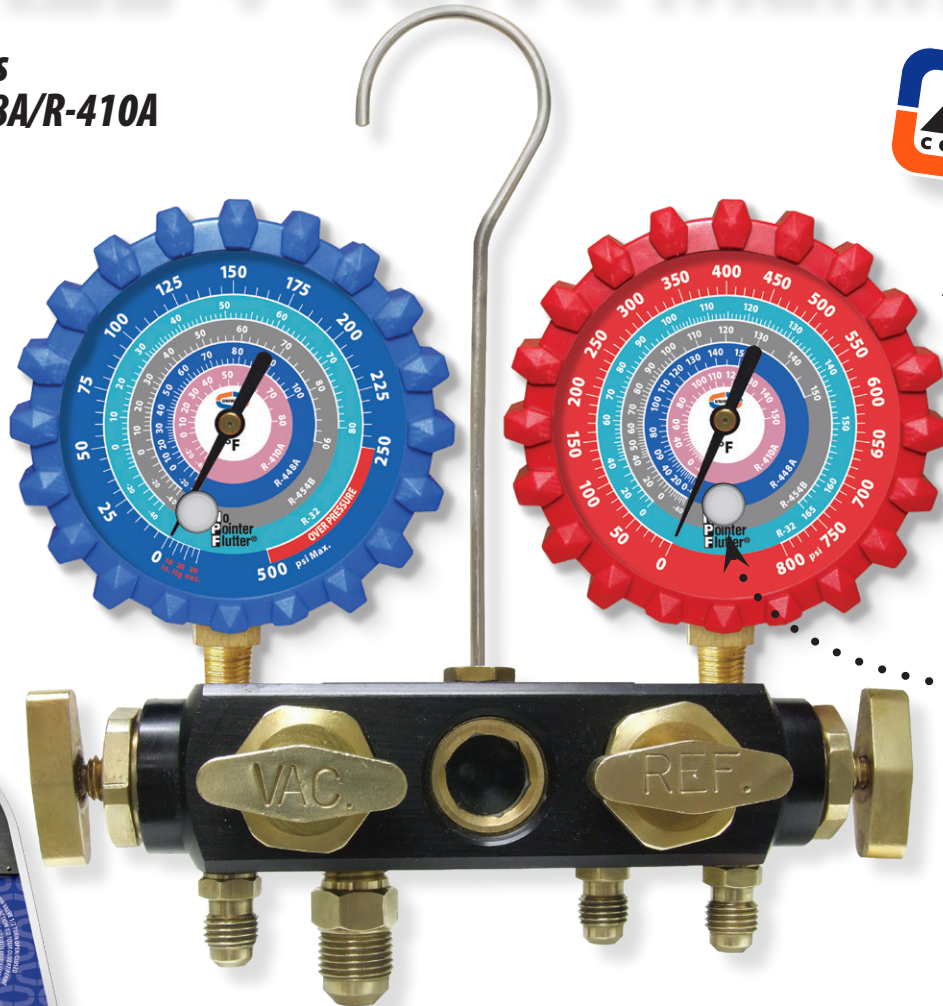


A2L 4-Valve Manifold

3-1/8" NPF® Gauges
R-32/R-454B/R-448A/R-410A



BONUS
**A2L TANK
ADAPTER
INCLUDED**



A2L4VM

*Lens Plug
for easy
zero reset*

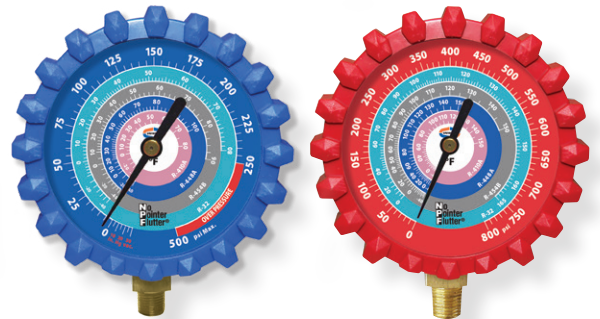


- Anodized aircraft aluminum block body with 4 ports for charging, evacuating and testing a system without changing or removing hoses
- 3/8" SAE port increases vacuum capacity and saves time
- Optical sight glass for monitoring refrigerant
- Durable, brazed brass T-handles provide smooth, precise adjustments
- NPF® No Pointer Flutter® 3-1/8" gauges with color coded refrigerant scales and gauge boots



A2L4VM5EZ

Part#	Description R-32/R-454B/R-448A/R-410A PSI/F°
A2L4VM	A2L 4-V Aluminum Manifold with 3-1/8" NPF® Gauges (R-32/R-454B/R-448A/R-410A) – No Hoses
A2L4VM5BV	A2L 4-V Aluminum Manifold with 3-1/8" NPF® Gauges (R-32/R-454B/R-448A/R-410A) and 5ft. Ball Valve Hoses
A2L4VM5EZ	A2L 4-V Aluminum Manifold with 3-1/8" NPF® Gauges (R-32/R-454B/R-448A/R-410A) and 5ft. EZ Turn Hoses
A2L4VM5H	A2L 4-V Aluminum Manifold with 3-1/8" NPF® Gauges (R-32/R-454B/R-448A/R-410A) and 5ft. Soft Magic® Barrier Hoses



**(R-32/R-454B/R-448A/R-410A)
Replacement Gauges 3-1/8" [80mm]
G439ND - A2L Red, Pressure
G440ND - A2L Blue, Compound**



UNIWELD PRODUCTS, INC. 2850 Ravenswood Road, Fort Lauderdale, FL 33312 U.S.A.
800.323.2111 • 954.584.2000 • Fax: 954.587.0109 • info@uniweld.com